

Piper PA-34 Wing Root Fairing	Issue Date: 7-4-87
STC No. SA1238GL	Rev. D
Manual No. 34WR-M	Rev Date: 3-31-10

PIPER PA-34 WING ROOT FAIRING INSTALLATION AND MAINTENANCE MANUAL

Aircraft Eligibility: Piper PA-34-200, PA-34-200T, PA-34-220T

Knots 2U, Ltd.
709 Airport Road
Burlington, WI 53105
www.knots2u.com

Piper PA-34 Wing Root Fairing	Issue Date: 7-4-87
STC No. SA1238GL	Rev. D
Manual No. 34WR-M	Rev Date: 3-31-10

Revision Control

Rev. No.	Date	Effect
A	09/15/92	Added revision page, revised table of contents, and revised fairing installation procedures.
B	06/01/97	Changed name and address.
C	01/04/99	Moved revision to front cover, general cleanup, changed to #6 Stainless Steel hardware, installation procedure changes.
D	07/01/09	ECO 0173

Piper PA-34 Wing Root Fairing	Issue Date: 7-4-87
STC No. SA1238GL	Rev. D
Manual No. 34WR-M	Rev Date: 3-31-10

Table of Contents

Section	Title	Page
	Cover Page	1
	Revision Control	2
	Table of Contents	3
1.0	Right Side Installation P/N CWRR	4
1.1	Locating Holes in Fairing P/N CWRR	4
1.2	Drilling Holes in Fuselage and Fairing	4
1.3	Enlarging Mounting Holes in Fairing	4
1.4	Application of Foam Tape P/N 189-715	4
1.5	Mounting Fairing P/N CWRR	4
2.0	Left Side Installation P/N CWRL	4
3.0	Fairing Removal	4
4.0	Paper Work	5
5.0	Parts List	5
	Detail 1	6
6.0	Maintenance / Instructions for Continued Airworthiness	7

Piper PA-34 Wing Root Fairing	Issue Date: 7-4-87
STC No. SA1238GL	Rev. D
Manual No. 34WR-M	Rev Date: 3-31-10

Section 1.0

Right Side Installation P/N CWRR

1.1 Locating Holes in Fairing P/N CWRR

Referring to Detail #1, locate and mark hole locations on the right Wing Root Fairing P/N CWRR. Place fairing in position on right wing holding it tightly against fuselage and wing. Note the location of any existing rivets, or skin seams that may interfere with the hole locations just marked. If an existing rivet falls under a hole location or on a skin seam, the new hole may be moved up to two inches fore or aft or up to .3125" up or down to provide clearance. Re-mark fairing for new locations.

1.2 Drilling Holes in Fuselage and Fairing.

CAUTION MUST BE USED WHEN DRILLING INTO FUSELAGE TO AVOID DRILLING ANY DEEPER THAN NECESSARY. Some models have a fuel line running in the attachment area on the pilot side. Care must be taken not to drill into the fuel line or leave a rivnut or screw that could come in contact with the fuel line. While holding fairing in place, drill a #40 hole at the aft hole location into fairing and fuselage. Place cleco in hole and continue to drill #40 holes at all marked locations using clecos as you go. (To obtain optimum fit, hole locations may be moved up to two inches fore or aft or up to .3125" up or down.)

1.3 Enlarging Mounting Holes in Fairing.

Enlarge all mounting holes in fairing to a # 15 hole size. Holes may then be countersunk or enlarged slightly more to fit the DP1075-12SS washer. Enlarge all holes in airframe to a #15 hole size to fit the A6K-75 rivnut.

1.4 Application of Foam Tape P/N 189-715.

Apply foam tape P/N 189-715 around entire perimeter of fairing. Tape should be placed 1/16" from the edge all around. This will create a seal and yet not be visible from the outside of the fairing.

1.5 Mounting Fairing P/N CWRR.

Install rivnuts P/N A6K-75 in fuselage holes (10 req). Using (10) DP 1075-12SS washers and (10) AN507C-632-R8 screws install fairing P/N CWRR on wing. For a more finished look RTV silicone, or equivalent may be placed in a small bead around Wing Root Fairing.

Section 2.0

Left Side Installation P/N CWRL

Repeat steps 1.1 thru 1.5 on left side of aircraft using P/N CWRL in place of CWRR. . Some models have a fuel line running in the attachment area on the pilot side. Care must be taken not to drill into the fuel line or leave a rivnut or screw that could come in contact with the fuel line.

Section 3.0

Fairing Removal

To remove a wing root fairing simply remove screws and washers.

Piper PA-34 Wing Root Fairing	Issue Date: 7-4-87
STC No. SA1238GL	Rev. D
Manual No. 34WR-M	Rev Date: 3-31-10

Section 4.0

Paperwork

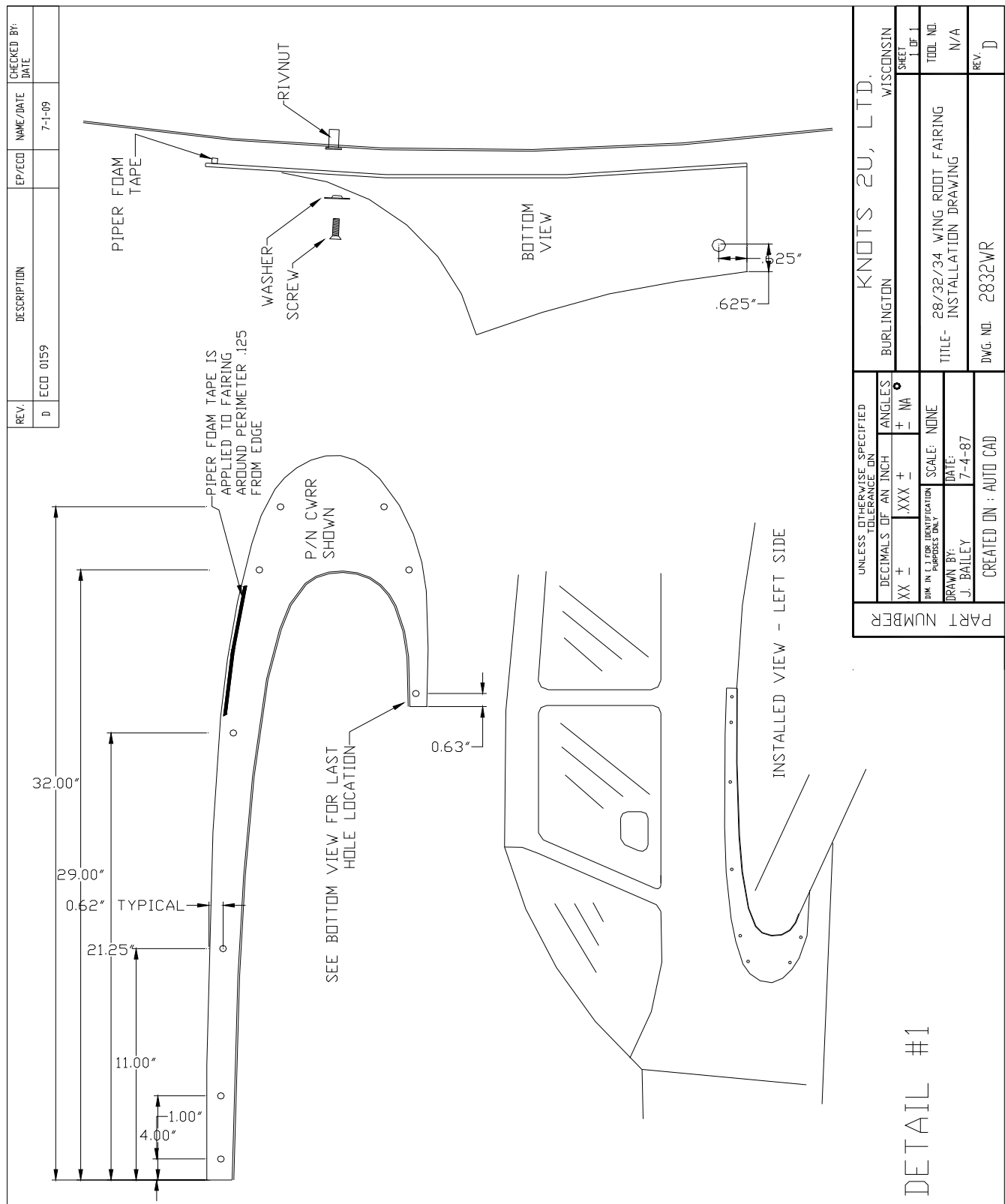
Perform paperwork (337 and logbook entry). Place Knots 2u Ltd. Piper PA-28 Wing Root Fairing Installation and Maintenance Manual with aircraft records.

Wing Root Fairing and Hardware weight: 1.1 lbs
 Arm: 82"

Section 5.0

Parts List

Part #	Qty	Description
CWRL	1	Left Wing Root Fairing
CWRR	1	Right Wing Root Fairing
AN507C-632R8	20	Countersunk Stainless Steel Screw
DP1075-12SS	20	Tinnerman Stainless Steel Washer
A6K-75	20	Rivnut
189-715	16'	Piper Foam Tape



REV.	DESCRIPTION	EP/ECD	NAME/DATE	CHECKED BY/DATE
D	ECD 0159		7-1-09	

UNLESS OTHERWISE SPECIFIED TOLERANCE IN		ANGLES	
DECIMALS OF AN INCH	ANGLES	+	-
XX	.XXX	+	NA
DIM. IN 1/16" FOR IDENTIFICATION PURPOSES ONLY			
SCALE: NONE		DATE: 7-4-87	
DRAWN BY: J. BAILEY		CREATED ON: AUTO CAD	
PART NUMBER		DWG. NO. 2832WR	
KNOTS 2U, LTD. BURLINGTON WISCONSIN		REV. D	
SHEET 1 OF 1		TITLE: 28/32/34 WING ROOT FAIRING INSTALLATION DRAWING	
TOOL NO. N/A		REV. D	

DETAIL #1

Piper PA-34 Wing Root Fairing	Issue Date: 7-4-87
STC No. SA1238GL	Rev. D
Manual No. 34WR-M	Rev Date: 3-31-10

Section 6.0

Maintenance / Instructions for Continued Airworthiness

The Airworthiness Limitations section is FAA approved and specifies maintenance required under Secs. 43.16 and 91.403 of the Federal Aviation Regulations unless an alternative program has been FAA approved.

For the current copy of this manual please contact Knots 2U, Ltd. at 262 763-5100 or via email at technical@knots2u.com.

1. Before each flight, visually inspect the fairings for loose screws and proper fit.
2. Upon each annual or 100 hour inspection, inspect the fairings for proper fit, loose screws, cracks or separated plies of fiberglass.
3. If any of the above discrepancies are found; repair using proper maintenance techniques and procedures, as outlined in AC 43.13 – 1B Chapter 3.